



STYROFOAM IN SECTION

DECK SPAN

IF HORIZ INTER
IF HORIZ INTER

IF HORIZ INTER
IF HORIZ INTER

W/ WP
WWF

WITH WORK POINT
WELDED WIRE FABRIC

and Engineers, Inc.
M/E/P Design Consultant
800 LaSalle Avenue
Minneapolis, Minnesota 55402
Tel: (616) 681-4443 Fax: (616) 681-2883

Geomantic
Designs, Inc.
Landscape Consultant
6806 S.W. 81st Street
Miami, Florida 33143
Tel: (305) 685-9898 Fax: (305) 688-8426

FP & C Consultants, Inc.
and Engineers, Inc.
Codes Consultant
9233 Ward Parkway
Kansas City, Missouri 64118
Tel: (816) 523-3377 Fax: (816) 523-8296

Huber, Hunt
and Nichols, Inc.
Construction Services Consultant
7690 Courtney Campbell Causeway, Suite 1150
Tampa, Florida 33607
Tel: (813) 287-8301 Fax: (816) 281-8958

Cini-Little
International, Inc.
Food Service Consultant
13780 N.W. 4th Street, Suite 108
Ft. Lauderdale, Florida 33325-0216
Tel: (954) 846-9800 Fax: (954) 846-0343

Wrightson, Johnson,
Haddon & Williams
Acoustical/Sound System Consultant
13714 Gamma Road, Suite 110
Dallas Texas 75244
Tel: (972) 934-3700 Fax: (972) 934-3720

SEAL:
NAME: Gary A. Storm, P.E.
SIGNATURE:
FLORIDA STATE REGISTRATION: 0050937
DISCIPLINE: Structural
DATE: March 17, 2000
TELEPHONE: (816) 561-4443

ISSUE DATE: 10-06-2000 PROJECT NO. 032117003

S0.2.00

SHEET NUMBER:

NARRATIVE

3 MATERIAL SYMBOLS

2 SYMBOLS

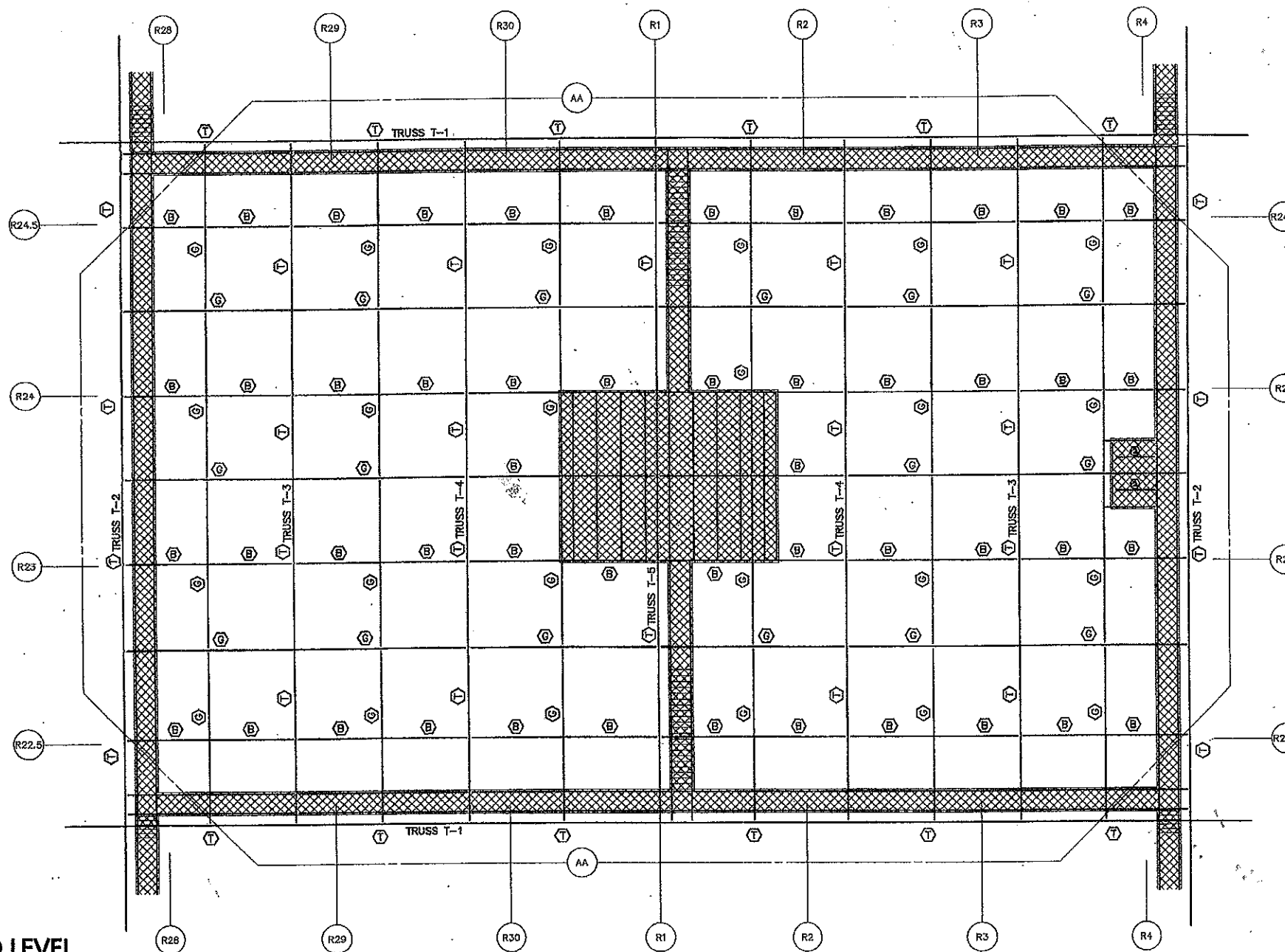
1 ABBREVIATIONS

STAGE RIGGING LOADING CRITERIA NARRATIVE

1. THE TOTAL RIGGING LOAD FOR AN END STAGE OR CENTER STAGE SETUP SHALL NOT EXCEED 120,000 LBS AND SHALL BE APPLIED WITHIN THE GUIDELINES GIVEN BELOW.
2. RIGGING LOADS MAY BE APPLIED ONLY TO BOTTOM CHORD MEMBERS MARKED WITH A (B), (T), OR (G). NO OTHER ELEMENTS SUCH AS ROOF JOISTS, TRUSS DIAGONALS OR TOP CHORDS, ROOF BEAMS, CATWALKS, CATWALK PLATFORMS, SCOREBOARD HOISTING PLATFORM, SPEAKERS OR SCOREBOARDS SHALL BE USED TO SUSPEND RIGGING LOADS.
3. RIGGING MEMBERS ARE DESIGNATED ON THE PLANS AS FOLLOWS:
 (B) RIGGING BEAM
 (T) RIGGING TRUSS BOTTOM CHORD MEMBER
 (G) RIGGING GIRDER
4. THE MAXIMUM TOTAL LOAD ON ANY RIGGING BEAM (MARKED (B)) IS 5000 LBS. THE MAXIMUM TOTAL LOAD PER SPAN SECTION FOR A MEMBER MARKED (T) OR (G) IS 5000 LBS. THE ALLOWABLE LOAD OF 5000 LBS MAY BE APPLIED AS A SINGLE POINT LOAD ANYWHERE ON THE SPAN OR DISTRIBUTED IN ANY MANNER ALONG THE SPAN OR SPAN SECTION.
5. RIGGING LOADS MAY BE ANGLED OR BRIDLED FROM RIGGING MEMBERS UP TO A MAXIMUM ANGLE OF 30 DEGREES FROM VERTICAL.



6. THE SUM OF ALL RIGGING LOADS TRIBUTARY TO ANY SINGLE TRUSS T-1, T-2, T-3, T-4 OR T-5 IS 80,000 LBS. THE TRIBUTARY LOAD TO EACH TRUSS INCLUDES RIGGING LOADS APPLIED DIRECTLY TO THE TRUSS BOTTOM CHORD MEMBERS (T) AND ALL END REACTIONS FROM RIGGING LOADS APPLIED TO RIGGING BEAMS (B) AND RIGGING GIRDERS (G).
7. MEMBERS MARKED (B) AND SPAN SECTIONS OF MEMBERS MARKED (T) AND (G) SHALL BE IDENTIFIED WITH 2" TALL WHITE, STICK ON LETTERS ON EACH SIDE AT THE CENTER OF EACH SPAN SECTION AS FOLLOWS: RIGGING BEAM - TOTAL MAX LOAD = 5000 LBS



5 PARTIAL PLAN - BOTTOM CHORD LEVEL RIGGING GRID DIAGRAM AND NARRATIVE

02